



FOR RENT

bom.org.uk/forhire



Birmingham Open Media (BOM) For Hire

Are you looking for a
venue for an event?

Contact lorna@bom.org.uk with your enquiries.

Prices are exclusive of VAT

BOM's unique home is available for hire.

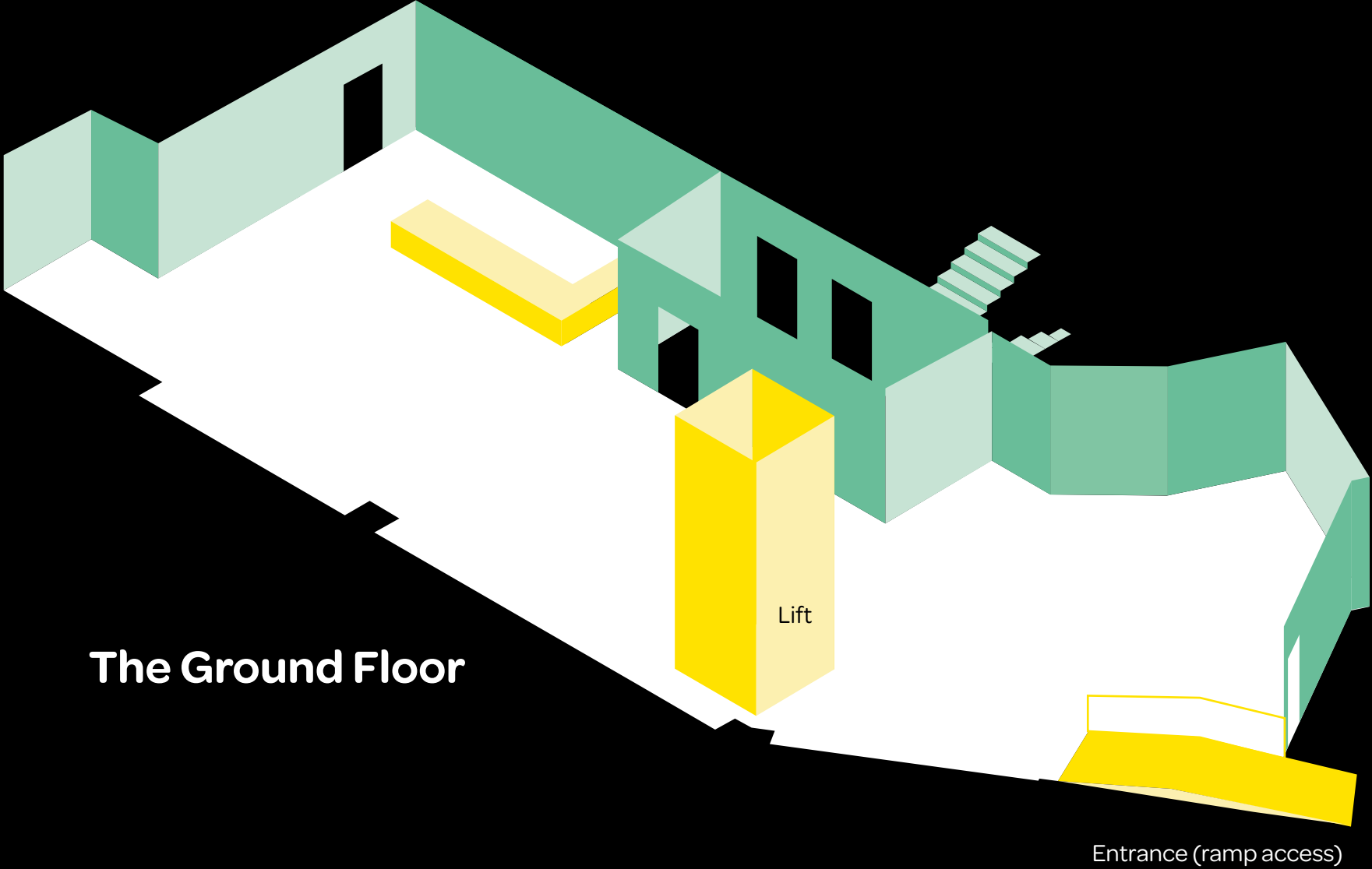
A converted 1960's Post Office in the
centre of England. Situated right next to
New Street Station. BOM is accessible,
Neurodivergent Friendly and offers
unusual spaces over three floors for
functions, conferences, parties,
rehearsals, meetings and workshops.

BOM is a Not for Profit , Social
Enterprise, Community Interest
Company.

- Fully licenced
- Catering facilities
- Bring your own catering option
- Gender neutral & disabled toilets
- Baby changing & feeding facilities
- 10% discount for Charities, Not For Profit, CIC's & Social Enterprises



Floor 0
The Ground Floor



The Ground Floor & The Mezzanine

A versatile ground and first floor space.

Great setting for any party, conference, workshop, corporate event, dinner, networking event and drinks reception. Flooded with natural light, newly installed screens, lighting and a plug and play system for online and hybrid meetings.

The Mezzanine overlooks the Ground Floor Studio, so a perfect area for a smaller workshop or breakout group or some extra space for larger parties, photoshoots, performances or any other type of event.

This space also has air-conditioning.

Size

The Ground Floor
83m²
Maximum capacity:
200 standing, 80 seated

The Mezzanine
25m²
Maximum capacity:
10 seated, 20 standing

Technical

LG 86" 4K Display

LG 50" 4K Display
All content sent to the 86" Display is automatically mirrored to the 50" Display can also display content independently

Apple T.V
Chromecast
Direct HDMI Connection

Wireless microphone system
2 x Shure SM58 Microphones
Bose S1 Pro PA System

Conferencing Rally Bar

Wifi

Hire Rates

£350 Half Day
3 hours

£750 Full Day
3.5 hours or over

Prices are exclusive of VAT





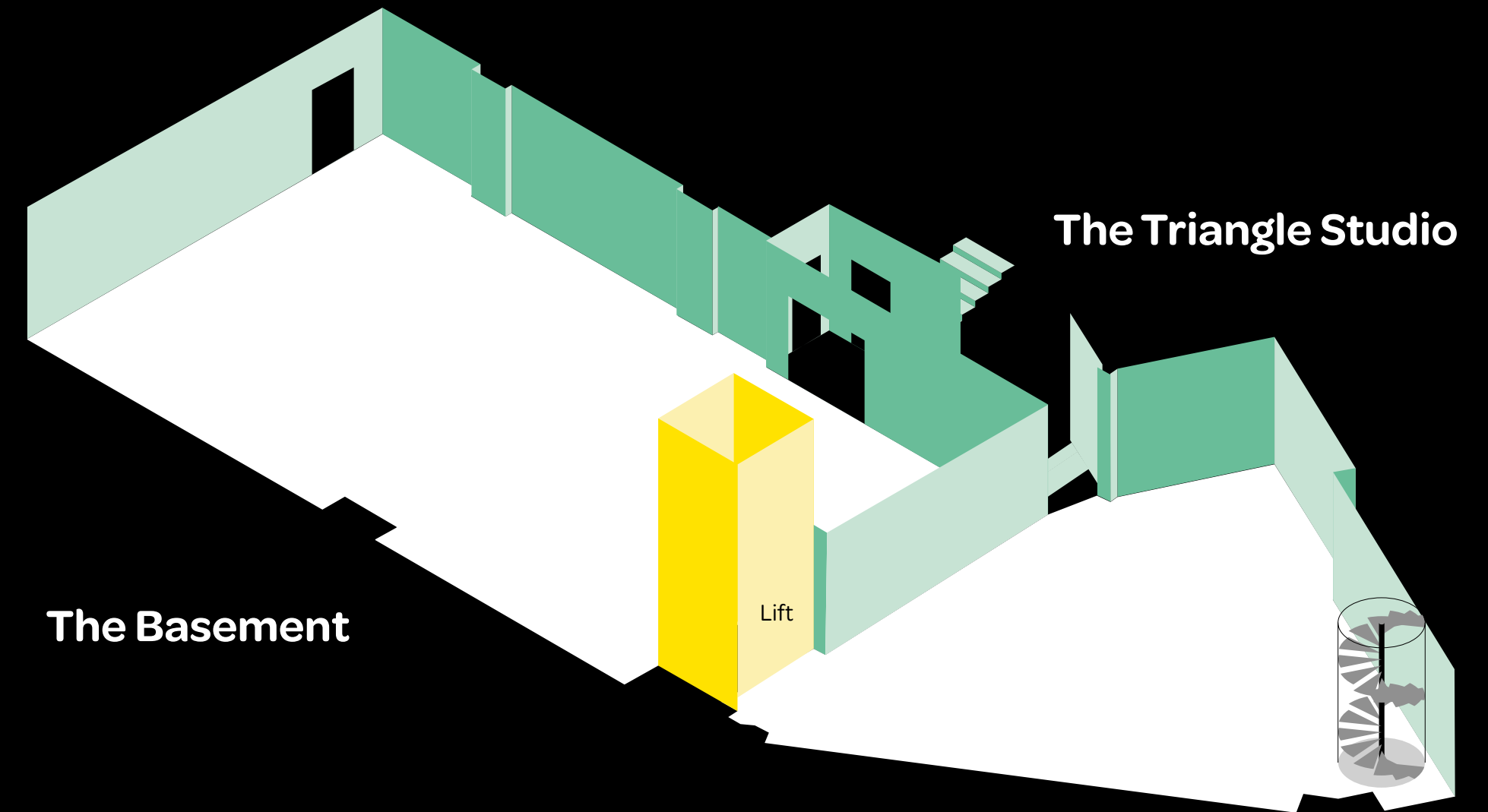


Floors -2

The Basement

Floors -1

The Triangle Studio



The Basement

Large underground ‘blank canvas’ space, suitable for all sorts of events. Layout and lighting can be changed to suit needs and mood. Boardroom or Theatre? Cabaret or Classroom? Great if you require a degree of privacy and/ or quiet.

The space can also be part-divided if you need a more intimate setting. The Basement is also great for performance rehearsals .Being a Basement it’s cool in the summer and retains warmth in the winter.

Size

80m²

Maximum capacity:

200 standing, 80 seated
Depending on furniture layout

Technical

Projector

PA

Additional screens and
hybrid meeting set up are
available on request

Portable Conferencing Rally
Bar and Screen

Wifi

Hire Rates

£250 Half Day
3 hours

£500 Per Day
3.5 hours or over

Prices are exclusive of VAT



The Triangle Studio

Once part of the Basement this now separate room named the Triangle Studio (for obvious reasons) , is a perfect breakout space for the Basement, or a super-quirky smaller room to hire by itself! The spiral staircase, bean bags and festoon lights, make this a completely unique and cosy space for chilling out, learning or socialising. Like the Basement its stays beautifully cool in the summer and cosy in the winter.

Size

52m²

Maximum capacity:
20 seated 30 standing

Technical

AV can be added

Wifi

Hire Rates

£200 Half Day
3 hours

£250 Per Day
3.5 hours or over

Prices are exclusive of VAT



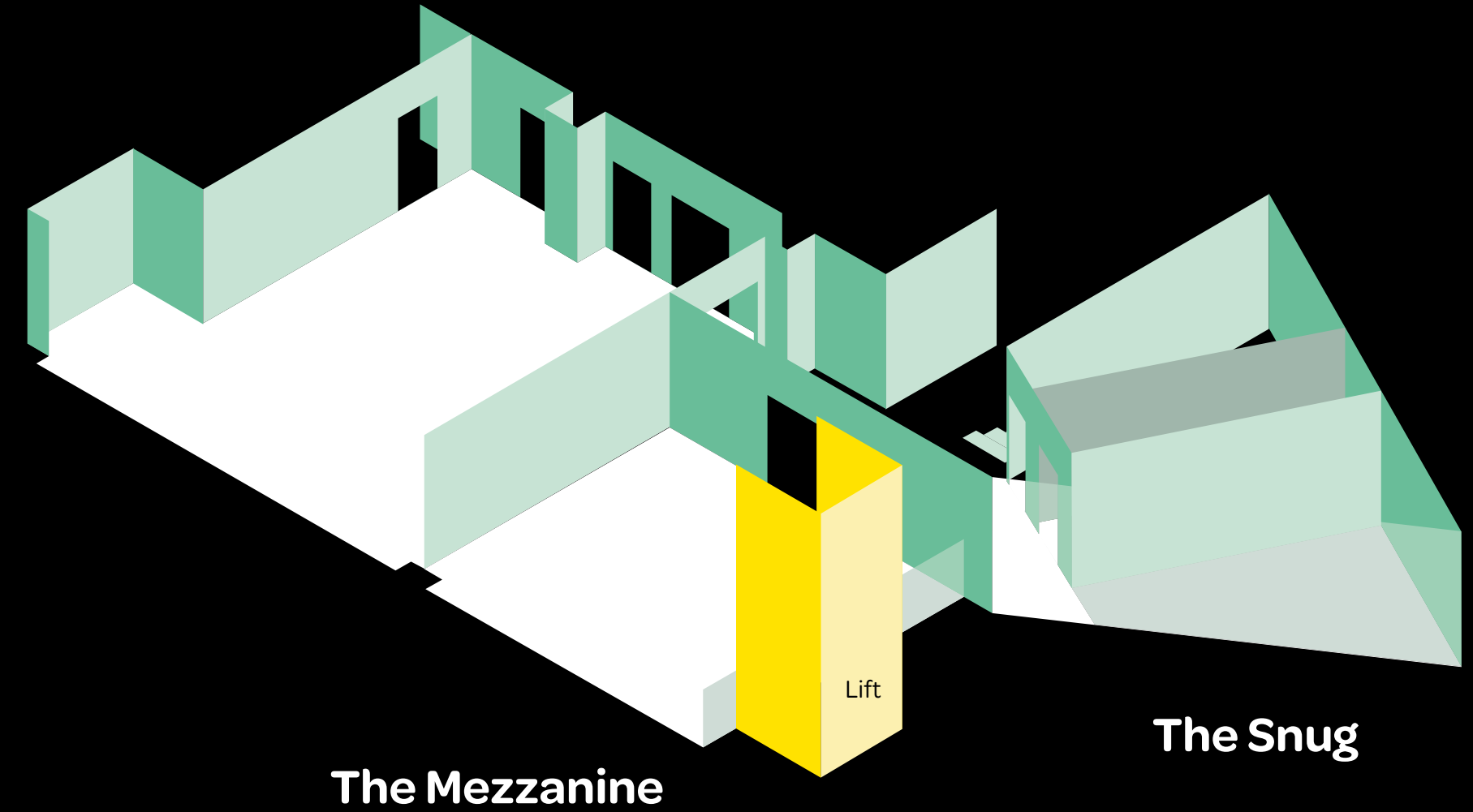
Floor 1

The Snug

The Co-Working Space

The Mezzanine

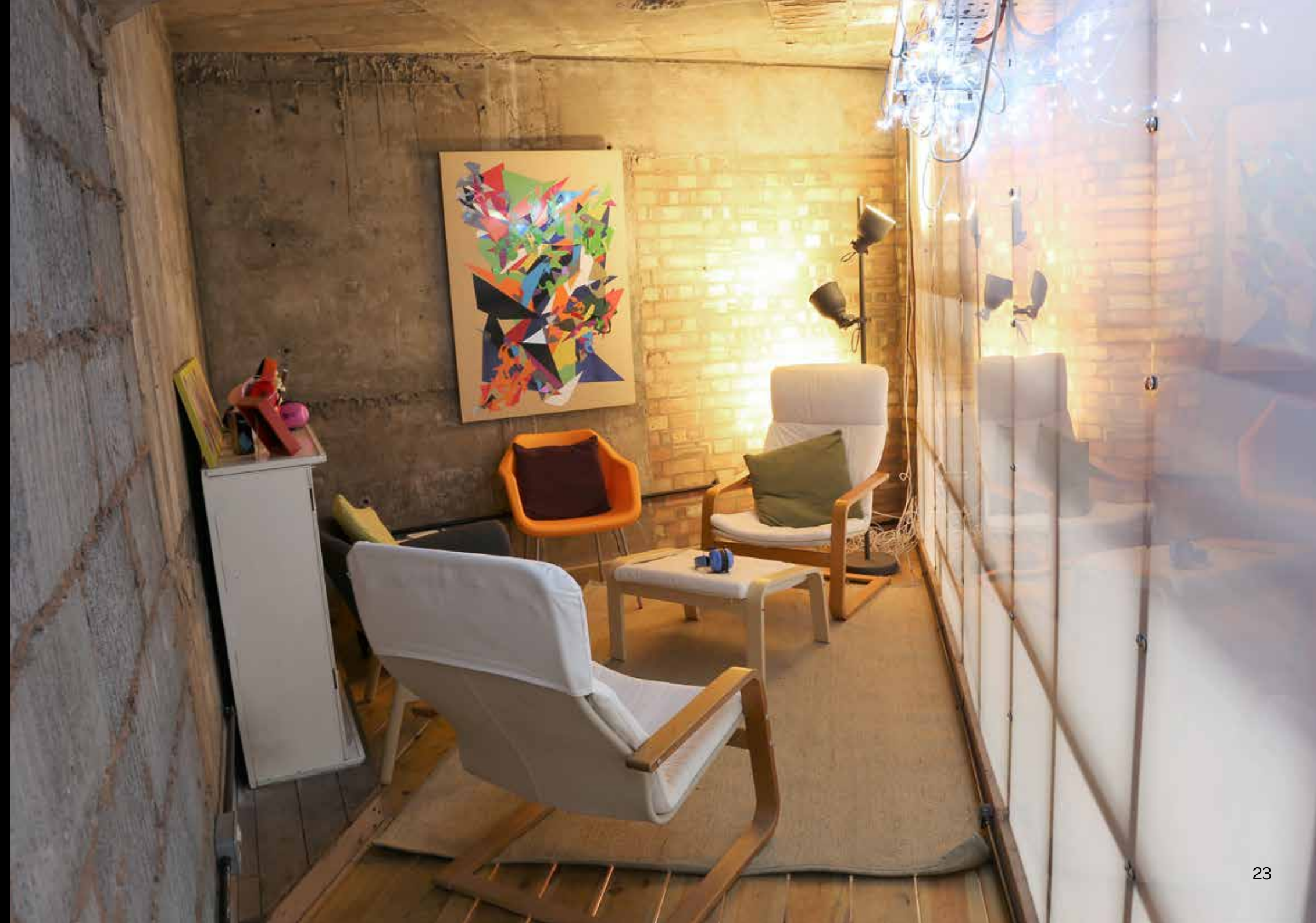
The Co-Working Space



The Snug

The Snug is our designated quiet space, with low lighting, comfortable chairs and a place you can remove yourself from the hustle and bustle of the rest of the building. It's not so removed that you don't still feel a part of the event, you can still hear what's going on, you just don't have to engage with it if you don't want to. This space is open to anyone from your event at no extra charge. We just ask you respect that people using that space may need some peace and quiet and this space isn't for socialising.

For spaces without AV ,we have several large TV's on stands that we can set-up to you specification.



The Co-Working Space

The Co-Working Space is usually occupied by the BOM team, however it can be hired outside usual BOM hours. We also offer this space for Hot Desking. Its filled with natural light and a great environment for creativity and non-traditional type meetings, such as workshops and classes. Please contact Lorna about price & availability.

For spaces without AV ,we have several large TV's on stands that we can set-up to you specification.



Testimonials

“It was an absolute pleasure, what a wonderful venue you have at BOM and it was great fun working with you and your fantastic team, please pass on our sincere thanks.”

Birmingham and Solihull Mental Health NHS Foundation Trust

“We held a team building day at BOM, wrapping around some fun activities at Floodgate. Our team were delighted with all aspects of the venue, proximity to New Street, welcoming and inclusive environment. The delicious fresh cooked lunch was wonderful, and all dietary requests were sensitively catered for. We had a very productive day.”

University of Birmingham

“Helpful staff, good facilities - really great for a presentation plus discussions!”

Curiosity Productions

“Really recommend BOM for any conference events - very accommodating team, a lovely space and great food.”

Culture Central

For further details please contact
lorna@bom.org.uk





FOR RENT